

VIRGILIO CALECA, GABRIELLA LO VERDE & MATTEO MALTESE

FIRST RECORD IN ITALY OF *PSYLLAEPHAGUS BLITEUS* RIEK
(Hymenoptera Encyrtidae) PARASITOID
OF *GLYCASPIS BRIMBLECOMBEI* MOORE (Hemiptera Psyllidae)

SUMMARY

Psyllaephagus bliteus Riek (Hymenoptera Encyrtidae), parasitoid of the red gum lerp psyllid *Glycaspis brimblecombei* Moore (Hemiptera Psyllidae), has been recorded for the first time in Italy in September 2011. The arrival of *P. bliteus* in Sicily is due to an accidental introduction, probably together with its host, as already happened in New Zealand, Brazil, Spain and Morocco.

RIASSUNTO

Ritrovamento in Italia di Psyllaephagus bliteus Riek (Hymenoptera Encyrtidae) parassitoide di Glycaspis brimblecombei Moore (Hemiptera Psyllidae). Viene segnalata per la prima volta in Italia la presenza di *Psyllaephagus bliteus* Riek (Hymenoptera Encyrtidae) parassitoide della psilla dal folliolo bianco ceroso dell'eucalipto, *Glycaspis brimblecombei* Moore (Hemiptera Psyllidae). Il rinvenimento del parassitoide in Sicilia segue di pochi mesi le prime segnalazioni del suo ospite nell'isola. Il suo arrivo, probabilmente insieme al suo ospite, è da ritenere accidentale così come già avvenuto in Nuova Zelanda, Brasile, Spagna e Marocco.

INTRODUCTION

In late spring 2011 *Glycaspis brimblecombei* Moore, an Australian psyllid feeding on *Eucalyptus* spp., was recorded in Sicily (LO VERDE *et al.*, 2011), while in Southern and Central Italy it was found in June 2010 (LAUDONIA & GARONNA 2010; GARONNA *et al.* 2011; PERIS-FELIPO *et al.*, 2011), and few months after it was also detected in Sardinia (EPPO, 2011). *G. brimblecombei* arrived in North America in 1998 (California, 1998: GILL,

1998; BRENNAN *et al.* 1999; Mexico 2001: CIBRIÁN *et al.* 2001); afterwards it spread in Hawaii (NAGAMINE & HEU, 2001), South America (Chile, SANDOVAL & ROTHMANN, 2002; Brazil, WICKEN *et al.*, 2003; Argentina, BOUVET *et al.*, 2005; Ecuador, ONORE & GARA, 2007; Venezuela, ROSALES *et al.*, 2008; Peru, BURCKHARDT *et al.*, 2008) and some African islands (Mauritius, SOOKAR *et al.*, 2003; Madagascar, HOLLIS, 2004). In 2008 the psyllid was found in Europe (Spain and Portugal, HURTADO & REINA, 2008; BORRAJO *et al.*, 2009; PRIETO-LILLO *et al.*, 2009), and in 2009 reached Morocco (BAMI, 2011; IBNELAZYZ, 2011).

G. brimblecombei can be easily detected observing the presence on leaf surfaces of the characteristic white cones (lerps) produced by nymphs. High population levels can cause leaf fall, a decrease in growth rate, and in some cases death of the infested plant (GILL, 1998; DAHLSTEN *et al.*, 2005). In Italy it threatens eucalyptus trees in parks, urban areas and plantations, and Italian beekeepers are worried because of the dramatically lower quality and quantity of eucalyptus honey (GARONNA *et al.*, 2011; PIBIRI, 2011).

In California, a classical biological control program has been launched, collecting natural enemies in Australia, selecting them and finally releasing the encyrtid wasp *Psyllaephagus bliteus* Riek from the end of 1999 to 2003 (PAINE *et al.*, 2000; DAHLSTEN *et al.*, 2005). As a consequence of biological studies and parasitoid rearing carried out before its release in the field, Zuparko (in DAANE *et al.*, 2005) synonymized *Psyllaephagus quadricyclus* Riek, described on male specimens (characterized by four ring segments in the antenna, Fig. 1) under *P. bliteus*, described on female specimens (Fig. 2).

P. bliteus parasitizes *G. brimblecombei* and other psyllids as *Boreioglycaspis melaleucaae* Moore on *Melaleuca quinquenervia* (Cav.) S.T. Blake (Myrtaceae), *Creiis costatus* (Froggatt), *Ctenarytaina eucalypti* (Maskell), *Glycaspis granulata* (Froggatt) and *Glycaspis* sp. on *Eucalyptus* spp. (RIEK, 1962; HERTING, 1972; WITHERS, 2001; DAHLSTEN *et al.*, 2002; DAANE *et al.*, 2005; BERRY, 2007).

Known distribution of *Psyllaephagus bliteus*: Australia (Australian Capital Territory, South Australia, New South Wales, Queensland) (RIEK, 1962); New Zealand (WITHERS, 2001; BERRY, 2007); North America (California, PAINE *et al.*, 2000; Mexico, PLASCENCIA *et al.*, 2005); South America (Brazil, BERTI-FILHO *et al.*, 2003; Chile, IDE *et al.*, 2006); Spain, (PEREZ-OTERO *et al.*, 2011); Morocco (BAMI, 2011).

P. bliteus has been also released in Mexico (2002: PLASCENCIA *et al.*, 2005) and Chile (2003: IDE *et al.*, 2006). In several countries the parasitoid arrived without any release: in New Zealand it has been detected on *G. granulata* (WITHERS, 2001; BERRY, 2007), while in Brazil, Spain and Morocco on

Fig. 1 — Head and prothorax of a male *Psyllaephagus bliteus*; four ring segments are clearly visible in the antenna.



Fig. 2 — Female *P. bliteus*.

G. brimblecombei (BERTI-FILHO *et al.*, 2003; PEREZ-OTERO *et al.*, 2011; BAMI, 2011; Jean Claude Malausa, *pers. comm.*).

Based on these records, in September 2011 a monitoring on *G. brimblecombei* started in Western Sicily to detect the possible occurrence of the encyrtid.

MATERIALS AND METHODS

Samplings were carried out in September, October and November in 32 sites of Palermo, Trapani and Agrigento Provinces. Each sample consisted of leaves of *Eucalyptus camaldulensis* Dehnh. bearing a total number of at least 100 fully developed lerps. Lerps were analysed to detect the exit hole of the parasitoid (Fig. 3). In the laboratory lerps without hole were removed counting the number of parasitized host, in this case called mummies (Fig. 4). The psyllid instars found on the leaves have been reared at room temperature (for about two weeks) until adults emerged. The parasitization level was calculated as the percentage of parasitized psyllid (pierced lerps and unpierced mummies/total collected fully developed lerps).



Fig. 3 — Lerp of *Glycaspis brimblecombei* pierced by an emerging adult of *P. bliteus*s.



Fig. 4 — Mummy of *G. brimblecombei* deriving from the transformation of the last instar nymph due to the parasitization by *P. bliteus*.

RESULTS AND DISCUSSION

The parasitization due to *P. bliteus* has been verified for the first time on September 19th in Marsala (Contrada Granatello, Trapani Province), finding few pierced lerps and mummies (Figs. 3, 5). Afterwards, pierced lerps, mummies and adults of *P. bliteus* (Figs. 1-6) have been collected in other six sites: two in Sciacca (Agrigento Province), one in Marsala (Contrada Digerbato, Trapani Province) and the last one in Balestrate (Contrada Sicciarotta, Palermo Province) and the last two in Palermo town (Fig. 7). All these sites are close (less than 4 km) to the coastline.

The maximum level of parasitization (6.6%) has been recorded in samples collected in October in one of Sciacca sites. In the other six sites the parasitization resulted between 1 and 4%. The distance among the sites of recovery (Fig. 7) indicates that the parasitoid can be considered spread in all coastal areas of Western Sicily.



Fig. 5 — Male *P. bliteus* emerging from a *G. brimblecombei* mummy.

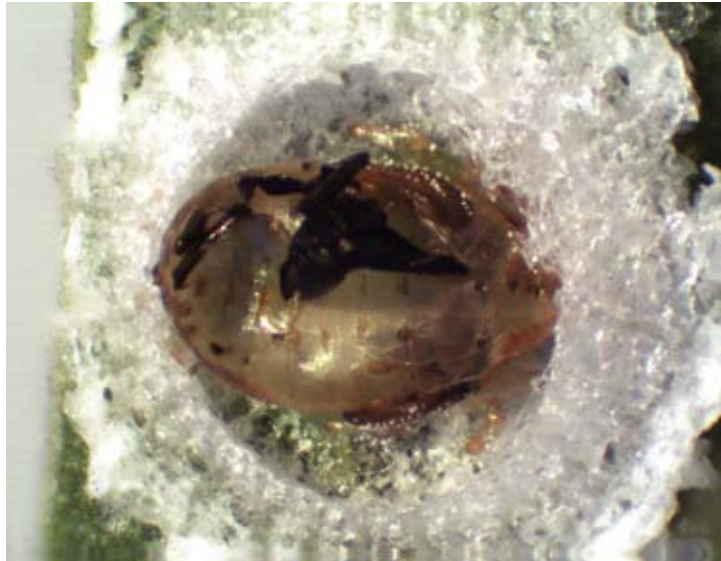


Fig. 6 — Pierced *G. brimblecombei* mummy and *P. bliteus* pupal remnants soon after the parasitoid emergence.

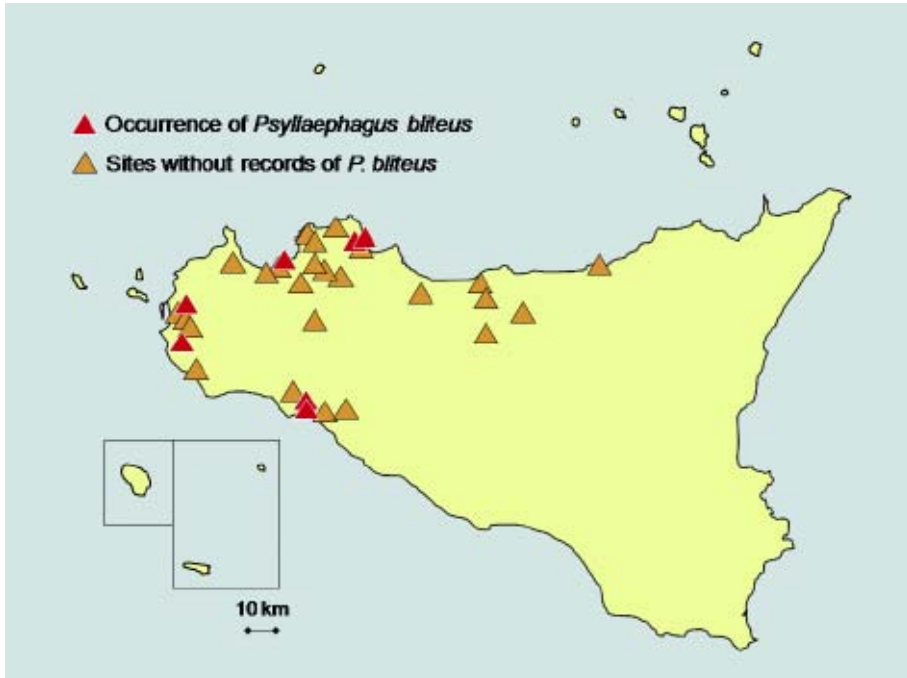


Fig. 7 — Sicilian sites in which the presence of *P. bliteus* has been investigated.

CONCLUSIVE REMARKS

The arrival of *P. bliteus* in Italy is due to an accidental introduction, probably together with its host, as already happened in New Zealand, Brazil, Spain and Morocco (WITHERS, 2001; BERRY, 2007; BERTI-FILHO *et al.*, 2003; PEREZ-OTERO *et al.*, 2011; BAMI, 2011; Jean Claude Malausa, *pers. comm.*). The ability of several parasitoid species to spread is well known, as demonstrated also by *Closterocerus chamaeleon* (Girault) (Hymenoptera Eulophidae), parasitoid of the eucalyptus gall wasp *Ophelimus maskelli* (Ashmead) (Eulophidae), released in Sicily in 2006 and found in Tunisia and Algeria in 2007 and 2008, respectively (CALECA, 2010; LO VERDE *et al.*, 2010; CALECA *et al.*, 2011).

The recovery of *P. bliteus* in Italy finds a remarkable interest in the perspective of a biological control of its host, as the presence and gradual diffusion of *P. bliteus* allowed a satisfactory control in the countries where it has been released in classical biological control programs against the red gum lerp psyllid (California, DAHLSTEN *et al.*, 2005; Mexico, PLASCENCIA *et al.*, 2005; Chile, IDE *et al.*, 2006). In spite of the occurrence of several native natural ene-

mies attacking the newly introduced *G. brimblecombei* (VALENTE & HODKINSON, 2009; GARONNA *et al.*, 2010, 2011), they usually don't guarantee an effective control of the psyllid (DAHLSTEN *et al.*, 2005).

Moreover, the spontaneous diffusion of this exotic parasitoid allows to solve the paradoxical situation due to a recent Italian law, which currently prohibits the introduction of any exotic species, even if useful and essential for biological control of pests.

Acknowledgements — We thank very much Rocco Lo Duca and Francesco Tortorici for their collaboration during collection and analysis of samples. Paper partially founded by Assessorato Risorse Agricole e Alimentari della Regione Siciliana, Dipartimento regionale Azienda Foreste Demaniali, project “Studi ed indagini sulla presenza di avversità biotiche d'interesse forestale e sulle strategie di lotta”.

REFERENCES

- BAMI R., 2011 — Au secours de l'eucalyptus. — *Le matin*, 9 Juin 2011: 6.
- BERTI-FILHO E., COSTA V.A., ZUPARKO R.L. & LASALLE J., 2003 — Ocorrência de *Psyllaephagus bliteus* Riek (Hymenoptera: Encyrtidae) no Brasil. — *Rev. Agricultura*, Piracicaba, 78 (3): 304.
- BERRY J.A., 2007 — Key to the New Zealand species of *Psyllaephagus* Ashmead (Hymenoptera: Encyrtidae) with descriptions of three new species and a new record of the psyllid hyperparasitoid *Coccidoctonus psyllae* Riek (Hymenoptera: Encyrtidae). — *Austr. J. Entomol.*, 46: 99-105.
- BORRAJO P., LOPEZ G. & RUIZ F., 2009 — Primera cita de *Glycaspis brimblecombei* Moore (Homoptera: Psyllidae) en SO de España. — *Bol. Sanidad veg. Plagas*, 35: 355-361.
- BOUVET J.P.R., HARRAND L. & BURCKHARDT D., 2005 — Primera cita de *Blastopsylla occidentalis* y *Glycaspis brimblecombei* (Hemiptera: Psyllidae) para la República Argentina. — *Rev. Soc. entomol. argent.*, 64: 99-102.
- BRENNAN E.B., GILL R.J., HRUSA G.F. & WEINBAUM S.A., 1999 — First record of *Glycaspis brimblecombei* (Moore) (Homoptera: Psyllidae) in North America: initial observations and predator associations of a potentially serious new pest of *Eucalyptus* in California. — *Pan-Pacific Entomologist*, 75: 55-57.
- BURCKHARDT D., LOZADA P.W. & DIAZ B.W., 2008 — First record of the red gum lerp psyllid *Glycaspis brimblecombei* (Hemiptera: Psylloidea) from Peru. — *Bull. Soc. entomol. suisse*, 81: 83-85.
- CALECA V., 2010 — First record in Algeria of two eulophid wasps: *Closterocerus chamaeleon* (Girault) and its host, the Eucalyptus Gall Wasp *Ophelimus maskelli* (Ashmead). (*Hymenoptera Eulophidae*). — *Naturalista sicil.*, 34: 201-206.
- CALECA V., LO VERDE G., RIZZO M.C., & RIZZO R., 2011 — Dispersal rate and parasitism by *Closterocerus chamaeleon* (Girault) after its release in Sicily to control *Ophelimus maskelli* (Ashmead) (Hymenoptera, Eulophidae). — *Biol. Control*, 57: 66-73.
- CIBRIÁN T. D., INIGUEZ G. & DAHLSTEN D. L., 2001 — Conchuela del eucalipto *Glycaspis brimblecombei* Moore (Homoptera: Psylloidea; Spondylaspididae) Una nueva plaga del eucalipto introducida a Mexico. — *Mem. XXXVI Congr. nac. Entomol.*, Santiago de Querétaro, Querétaro: E-95.
- DAANE K.M., SIME K.R., DAHLSTEN D.L., ANDREWS J.W. jr. & ZUPARKO R.L., 2005 — The biology

- of *Psyllaephagus bliteus* Riek (Hymenoptera: Encyrtidae), a parasitoid of the red gum lerp psyllid (Hemiptera: Psylloidea). — *Biol. Control*, 32: 228-235.
- DAHLSTEN D.L., DAANE K.M., PAINE T.D., SIME K.R., LAWSON A.B., ROWNY D.L., ROLTSCH W.J., ANDREWS J.W. jr., KABASHIMA J.N., SHAW D.A., ROBB K.L., DOWNER J.A., GEISEL P.M., CHANEY W.E., INGELS C.A., VARELA L.G., BIANCHI M.L. & TAYLOR G., 2005 — Imported parasitoid helps control red gum lerp psyllid. — *California Agriculture*, 59: 229-234.
- DAHLSTEN D.L., ROWNY D.L., ROBB K.L., DOWNER J.A., SHAW D.A. & KABASHIMA J.N., 2002 — Biological control of introduced psyllids on eucalyptus. — *Proc. 1st Int. Symp. Biol. Control of Arthropods*, United States Department of Agriculture, Forest Service, Washington, USA: 357.
- EPPO (European and Mediterranean Plant Protection Organization), 2011 — *Glycaspis brimblecombei* occurs in Sardinia 2011/041. — *EPPO Reporting Service* 2011 (2): 12.
- GARONNA A.P., SASSO R. & LAUDONIA S., 2011 — *Glycaspis brimblecombei* (Hem.: Psyllidae), la psilla dal follicolo bianco ceroso, altra specie aliena dell'Eucalipto rosso in Italia. — *Forest@*, 18: 71-77.
- GILL R.J., 1998 — New state record: Redgum lerp psyllid, *Glycaspis brimblecombei*. — *California Plant Pest Dis. Report*, 17: 7-8.
- HERTING B., 1972 — Homoptera. A catalogue of parasites and predators of terrestrial arthropods. Section A. Host or Prey/Enemy. — *Commonwealth Agricultural Bureaux*, Slough, England, 2: 27.
- HOLLIS D., 2004 — Australian Psylloidea: Jumping plant lice and lerps insects. — *Australia Biol. Res. Study*, Canberra, Australia, XVI + 216 pp.
- HURTADO A. & REINA I., 2008 — Primera cita para Europa de *Glycaspis brimblecombei* Moore (Hemiptera: Psyllidae), una nueva plaga del eucalipto. — *Bol. Soc. entomol. aragonesa*, 43: 447-449.
- IDE M.S., MUNOZ A.C., BEECHE C.M., MONDACA E.J., JAQUES R.L., GONZALEZ P. & GOYCOOLEA P.C., 2006 — Deteccion y control biologico de *Glycaspis brimblecombei* Moore (Hemiptera: Psyllidae). — *Servicio Agrícola y Ganadero, Division de Proteccion Agrícola*, Santiago, Chile, 32 pp.
- IBNELAZYZ A., 2011 — Le Psylle d'Eucalyptus dans la Province d'El Kalaa des Sraghna. — *Bull. Phytos. ONSSA*, 1 (1): 3-4.
- LAUDONIA S. & GARONNA A.P., 2010 — The red gum lerp psyllid, *Glycaspis brimblecombei*, a new exotic pest of *Eucalyptus camaldulensis* in Italy. — *Bull. Insectol.*, 63: 233-236.
- LO VERDE G., BELLA S., CALECA V., RAPISARDA C. & SIDOTI A., 2011 — Presenza in Sicilia di *Glycaspis brimblecombei* Moore (Hemiptera Psyllidae) su *Eucalyptus camaldulensis* Dehnh. — *Naturalista sicil.*, 35: 425-434.
- LO VERDE G., DHAHRI S. & BEN JAMAA, M.L., 2010 — First record in Tunisia of *Closterocerus chamaeleon* (Girault) parasitoid of the Eucalyptus Gall Wasp *Ophelimus maskelli* (Ashmead) (Hymenoptera Eulophidae). — *Naturalista sicil.*, 34: 207-210.
- NAGAMINE W. T. & HEU R. A., 2001 — Red gum lerp psyllid *Glycaspis brimblecombei* Moore (Homoptera: Psyllidae). — *New Pest Advisory*, 01-02. (http://hawaii.gov/hdoa/pi/ppc/npa-1/npa01-02_rpsyllid.pdf).
- ONORE G. & GARA R.L., 2007 — First record of *Glycaspis brimblecombei* (Hemiptera: Psyllidae) in Ecuador, biological notes and associated fauna. — *Extended Abstracts of the 4th European Hemiptera Congress*, Ivrea, Turin, Italy, 41-42.
- PAINE T.D., DAHLSTEN D.L., MILLAR J.G., HODDLE M.S. & HANKS L.M., 2000 — UC scientists apply IPM techniques to new eucalyptus pests. — *California Agriculture*, 54: 8-13.
- PERIS-FELIPO F.J., MANCUSI G., TURRISI G.F. & JIMÉNEZ-PEYDRÓ R., 2011 — New corological and

- biological data of the Red Gum Lerp Psyllid, *Glycaspis brimblecombei* Moore, 1964 in Italy (Hemiptera, Psyllidae). — *Biodiversity Journal*, 2 (1): 13-17.
- PEREZ-OTERO R., BORRAJO P., MANSILLA J.P. & RUIZ F., 2011 — Primera cita en España de *Psyllaepbagus bliteus* Riek (Hymenoptera, Encyrtidae), parasitoide de *Glycaspis brimblecombei* Moore (Hemiptera, Psyllidae). — *Bol. Sanidad veg. Plagas*, 37 (1): 37-44.
- PIBIRI M., 2011 — Il killer degli eucalypti plana sull'isola. — *L'Unione Sarda*, 27 gen. 2011: 33.
- PRIETO-LILLO E., RUEDA J., HERNÁNDEZ R. & SELFA J., 2009 — Primer registro del psílido rojo del eucalipto, *Glycaspis brimblecombei* (Homoptera: Psyllidae), en la Comunidad Valenciana. — *Bol. Sanidad veg. Plagas*, 35: 277-281.
- ROSALES C.J., LOBOSQUE O., CARVALHO P., BERMÚDEZ L. & ACOSTA C., 2008 — *Glycaspis brimblecombei* Moore (Hemiptera: Psyllidae). "Red Gum Lerp". Nueva plaga forestal en Venezuela. — *Entomotropica*, 23: 103-104.
- SANDOVAL A. & ROTHMANN S., 2003 — Detección del psílido de los eucaliptos rojos, *Glycaspis brimblecombei* Moore (Hemiptera: Psyllidae) en Chile. — 24° Congr. nac. Entomol., Resúmenes (<http://www.udec.cl/insectos/resúmenes.html>).
- SOOKAR P., SEEWORUTHUN S.I. & RAMKHELAWON D., 2003 — The red gump lerp psyllid, *Glycaspis brimblecombei*, a new pest of *Eucalyptus* sp. in Mauritius. — AMAS, Food and Agricultural Research Council, Réduit, Mauritius.
- VALENTE C. & HODKINSON I., 2009 — First record of the red gum lerp psyllid, *Glycaspis brimblecombei* Moore (Hem.: Psyllidae), in Europe. — *J. appl. Entomol.*, 133: 315-317.
- WITHERS T.M. 2001 — Colonization of eucalypts in New Zealand by Australian insects. — *Austral. Ecology*, 26: 467-476.
- WICKEN C.F., COUTO E.B., ORLATO C., FERREIRA-FILHO P.J. & FIRMINO D.C., 2003 — Occorencia do psílideo-de-concha (*Glycaspis brimblecombei*) (Hemiptera: Psyllidae) em florestas de eucalipto do Brasil. — *Circular Técnica IPEF*, 201: 1-11.

Authors' addresses — V. CALECA, G. LO VERDE, M. MALTESE, Dipartimento DEMETRA, Università degli Studi di Palermo, Viale delle Scienze, Edificio 5 - 90128 Palermo (I); corresponding author: V. Caleca, e-mail: virgilio.caleca@unipa.it.